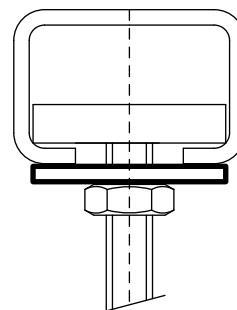


BIS Washer (Flat) – WM3

(G 30 80)

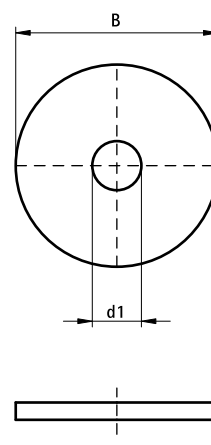
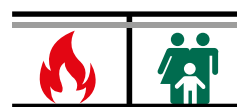
fixing to BIS WM3



Features and Benefits

- material: steel
- zinc plated
- tested for fire safety

Part No.	B (mm)	s (mm)	d1 (mm)	For Rail	Pack 1	Pack 2
6533408	35	2.5	Ø 8.5	WM3	100	500
6533410	35	2.5	Ø 10.5	WM3	100	500
6533412	35	2.5	Ø 12.5	WM3	50	250



Complementary

- BIS Fixing Rail - WM3
- BIS Cantilever Arm - WM3 (BUP1000)